



ELOTEX® FX1000

THE NEW STANDARD FOR HIGH PERFORMANCE FLEXIBLE
TILE ADHESIVES (C2 TE S1 / S2)

PICK UP A PERFECT SOLUTION – ELOTEX® FX1000

Emerging architectural trends that embrace the latest large-format, non-porous, and very thin tile look have brought up the demand for high performing adhesive formulations containing specialized additives. These challenging tile formulations focus on ensuring optimal rheology, bond strength on difficult substrates as well as compensating mechanical stresses by providing a high level of flexibility. Additionally, excellent technical performance must be followed by a low VOC-level, and thus, allowing the end products to fulfil *EMICODE® EC1^{PLUS} regulations.

To make it possible to meet these requirements, we have developed a new redispersible polymer powder combining high efficiency and superior performance thanks to our long-lasting advanced chemical and spray drying technology.

ELOTEX® FX1000 – SIGNIFICANTLY IMPROVED PERFORMANCE

ELOTEX® FX1000 is specially designed for high performance flexible tile adhesives (C2 TE S1 and C2 TE S2) featuring enhanced flexibility, adhesion as well as workability. Moreover, the new product shows excellent environmental compatibility, allowing the end users to formulate tile adhesives in accordance with the stringent eco-labelling requirements, such as *EMICODE® EC1^{PLUS}.

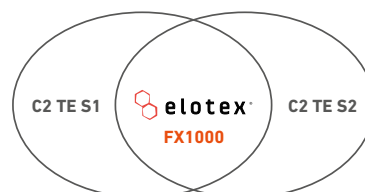
PRODUCT SPECIFICATION	
chemical base	vinyl acetate – vinyl versatate
product type	semi-flexible
protective colloid	PVOH
minimum film-forming temperature (MFFT)	5 °C
VOC *EMICODE® class	EC1 ^{PLUS}

PERFORMANCE BENEFITS OF ELOTEX® FX1000

- excellent tensile adhesion strength especially after wet storage and heat storage
- high flexibility (transverse deformation) even at low polymer dosages
- long open time and correction time
- improved workability and neutral rheology
- low VOC values – *EMICODE® EC1^{PLUS} compliance
- good saponification resistance

SIMPLE SOLUTION AND HIGH EFFICIENCY: ONE ADDITIVE FOR S1 AND S2 TILE ADHESIVES

ELOTEX® FX1000 enhances the performance of high-class tile adhesives (C2 S1 and C2 S2) and, at the same time, offers additional formulation reliability.



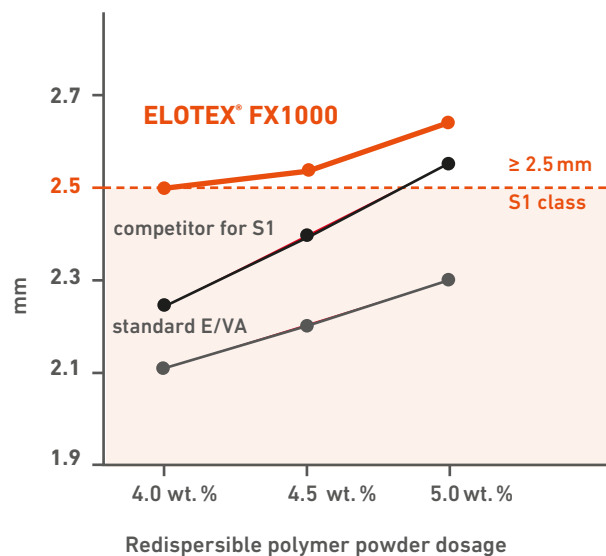


EFFECTIVE FOR C2 E S1 STARTING AT LOW POLYMER CONTENT – ELOTEX® FX1000

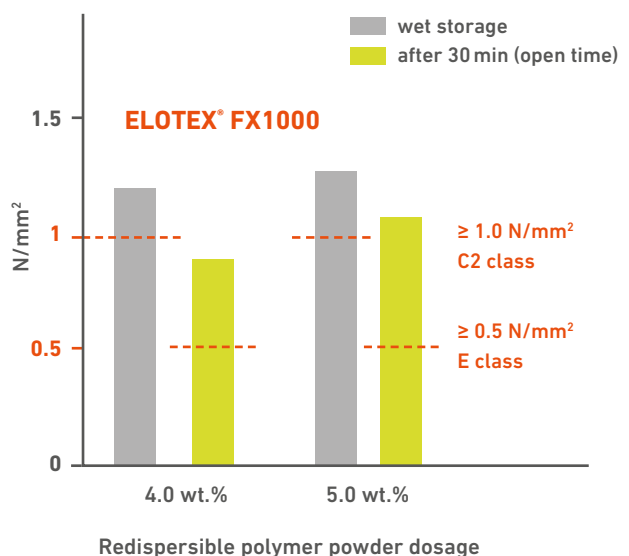
Tests on various formulations indicate that around 4.0 wt.% of ELOTEX® FX1000 is all it takes to achieve the minimum C2 TE S1 requirements as described per EN 12004.

Additionally, the new product shows excellent adhesion, especially after wet storage, as well as increased open time.

S1 DEFORMATION (EN 12004)



C2 E TENSILE ADHESION STRENGTH (EN 12004)



DESIGNED FOR C2 E S2 – ELOTEX® FX1000

ELOTEX® FX1000 has significantly improved workability, particularly noticeable in highly flexible C2 S2 (10–12 wt.% polymer powder) tile adhesives.

ELOTEX® FX1000 enables compliances with *EMI-CODE® EC1^{PLUS} even when used for tile formulations based on high polymer content such as C2 E S2 category.

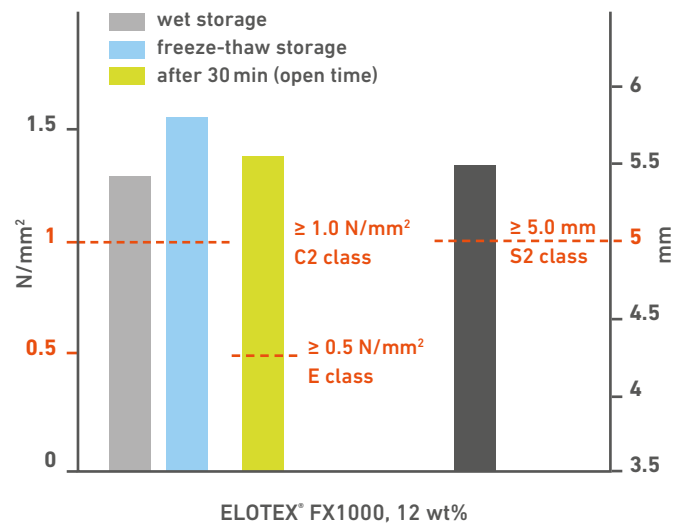
In C2 E S2 formulation, ELOTEX® FX1000 exhibits excellent transverse deformation, open time, and adhesion strengths particularly after wet storage and freeze-thaw storage.

FRESH MORTAR RHEOLOGY AFTER 60 MIN



S2 test formulation based on 12 wt.% redispersible polymer powder

C2 E TENSILE ADHESION STRENGTH (EN 12004) S2 DEFORMATION (EN 12004)

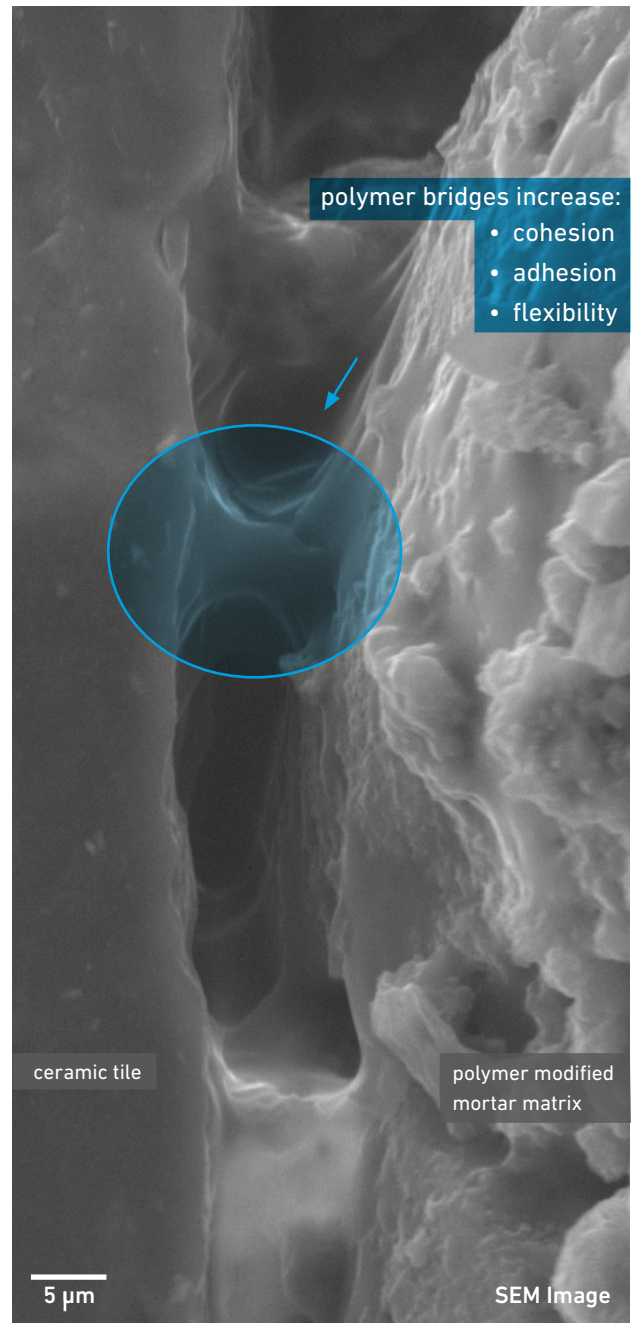
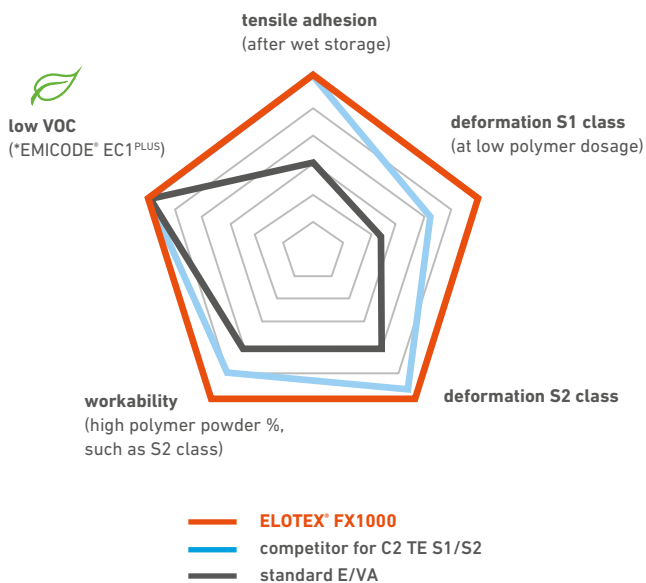


ELOTEX® FX1000 INNOVATES AND STRENGTHENS OUR TILING PRODUCT PORTFOLIO

ELOTEX® FX1000 is our latest innovation complementing our tiling product portfolio. If you are looking for a single polymer additive for S1 and/or S2 categories of high-class tile adhesives, the new ELOTEX® FX1000 is the right choice.

APPLICATION RANGE

- interior and exterior
- wall and floor tiles
- all format of tiles
- porous, vitreous ceramic, and natural stone tiles
- standard and fast-setting tile adhesives



ELOTEX® TILING PRODUCT PORTFOLIO

●●●● = excellent ●●● = very good ●● = good

ELOTEX®	Product Information			Performance Characteristics (acc. EN 12004)				Tile Adhesive Type Recommendation			
	Polymer Base	Rheology	*EMICODE® Compliance	Adhesion Strength	Open Time	Deformation	Workability	C1	C2(T)E	C2(T)ES1	C2(T)ES2
MP2100	E/VA	neutral	EC1 ^{PLUS}	●	●	●	●●	●●●●	●●●●	●	—
ST2400	E/VA	thixotropic	EC1 ^{PLUS}	●	●●	●	●●	●●●●	●●●●	●	—
FX3300	VA/E/VV	thixotropic	EC1 ^{PLUS}	●●	●●●	●●	●●	—	●●●●	●●●●	—
FX6300	VA/E/VC	neutral	EC1 ^{PLUS}	●●●	●●●	●	●●●	—	●●●●	●	●
FX1000	VA/VV	neutral	EC1 ^{PLUS}	●●●	●●●	●●●	●●●	—	—	●●●●	●●●●
FX5600	VA/E/VV/Ac	neutral	EC2	●●●	●●●	●●	●●	—	—	●	●●●

*Only full members of the GEV may label their products with EMICODE® seal after fulfilling certain conditions and testing. EMICODE® EC2, EC1 and EC1^{PLUS} are registered trademarks of GEV. Note that the VOC emissions of the final dry mortar are impacted by formulation ingredients other than only redispersible polymer powder.



REDISPERSIBLE POLYMER POWDER
contact.elotex@celanese.com

CELANESE SWITZERLAND AG

Industriestrasse 17a
CH-6203 Sempach Station
T +41 41 469 69 69
contact.elotex@celanese.com
www.elotex.com
www.celanese.com